

Hierarchical dynamical mixtures for functional data clustering and segmentation

FAICEL CHAMROUKHI



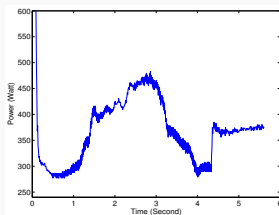
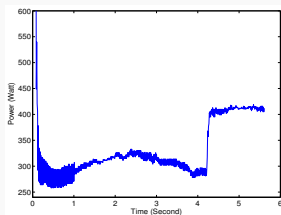
Joint Statistics Seminar

KU LEUVEN

December 1st, 2016

Temporal data

Temporal data with regime changes



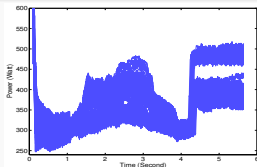
- Data with regime changes over time
- Abrupt and/or smooth regime changes

Objectives

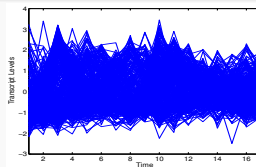
Temporal data modeling and segmentation

Functional data

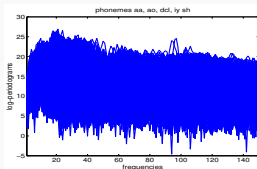
Many curves to analyze



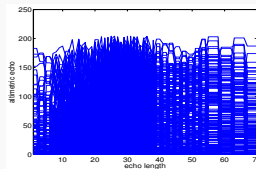
Railway switch curves



Yeast cell cycle curves



Phonemes curves



Satellite waveforms

Objectives

- Curve clustering/classification (functional data analysis framework)
- Deal with the problem of regime changes \leftrightarrow Curve segmentation

Scientific context

- The area of **statistical learning** and **analysis of complex data**.
- **Data** : Complex data \leftrightarrow *heterogeneous, temporal/dynamical, high-dimensional/functional, incomplete,...*
- **Objective**: Transform the data into knowledge :
 \leftrightarrow **Reconstruct hidden structure/information, groups/hierarchy of groups, summarizing prototypes, underlying dynamical processes, etc**

Modeling framework

- **Latent variable** models : $f(x|\boldsymbol{\theta}) = \int_z f(x, z|\boldsymbol{\theta})dz$

Generative formulation :

$$z \sim q(z|\boldsymbol{\theta})$$

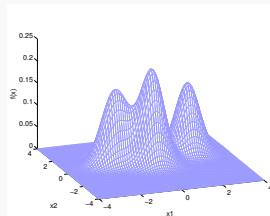
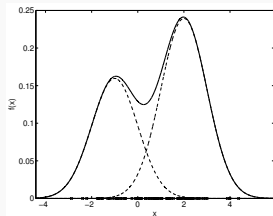
$$x|z \sim f(x|z, \boldsymbol{\theta})$$

\leftrightarrow **Mixture models** : $f(x|\boldsymbol{\theta}) = \sum_{k=1}^K \mathbb{P}(z = k) f(x|z = k, \boldsymbol{\theta}_k)$ and extensions

Mixture modeling framework

Mixture modeling framework

- Mixture density: $f(x|\theta) = \sum_{k=1}^K \pi_k f_k(x|\theta_k)$



- Generative model

$$z \sim \mathcal{M}(1; \pi_1, \dots, \pi_K)$$
$$x|z \sim f(x|\theta_z)$$

↪ Algorithms for inferring θ from the data

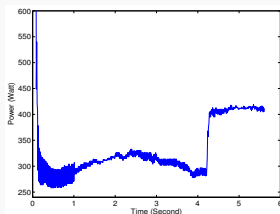
Outline

- 1 Mixture models for temporal data segmentation
- 2 Mixture models for functional data analysis

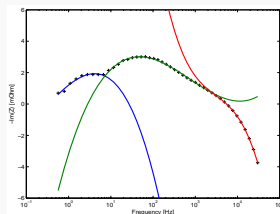
Outline

- 1 Mixture models for temporal data segmentation
 - Regression with hidden logistic process
- 2 Mixture models for functional data analysis

Temporal data with regime changes



Railway data



Energy data

Mixture models for temporal data segmentation

$\mathbf{y} = (y_1, \dots, y_n)$ a time series of n univariate observations $y_i \in \mathbb{R}$ observed at the time points $\mathbf{t} = (t_1, \dots, t_n)$

Times series segmentation context

- Time series segmentation is a popular problem with a broad literature
- Common problem for different communities, including statistics, detection, signal processing, machine learning, finance
- The observed time series is generated by an underlying process
↔ segmentation \equiv recovering the parameters the process' states.
- Conventional solutions are subject to limitations in the control of the transitions between these states
- ↔ Propose generative latent data modeling for segmentation and approximation
- ↔ segmentation \equiv inferring the model parameters and the underlying

Regression with hidden logistic process

Let $\mathbf{y} = (y_1, \dots, y_n)$ be a time series of n univariate observations $y_i \in \mathbb{R}$ observed at the time points $\mathbf{t} = (t_1, \dots, t_n)$ governed by K regimes.

The Regression model with Hidden Logistic Process (RHLP) [1]

$$y_i = \beta_{z_i}^T \mathbf{x}_i + \sigma_{z_i} \epsilon_i \quad ; \quad \epsilon_i \sim \mathcal{N}(0, 1), \quad (i = 1, \dots, n)$$
$$Z_i \sim \mathcal{M}(1, \pi_1(t_i; \mathbf{w}), \dots, \pi_K(t_i; \mathbf{w}))$$

Polynomial segments $\beta_{z_i}^T \mathbf{x}_i$ with $\mathbf{x}_i = (1, t_i, \dots, t_i^p)^T$ with logistic probabilities

$$\pi_k(t_i; \mathbf{w}) = \mathbb{P}(Z_i = k | t_i; \mathbf{w}) = \frac{\exp(w_{k1}t_i + w_{k0})}{\sum_{\ell=1}^K \exp(w_{\ell 1}t_i + w_{\ell 0})}$$

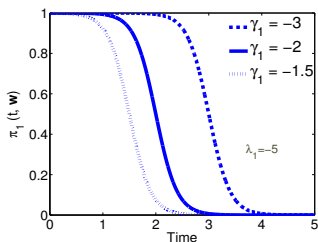
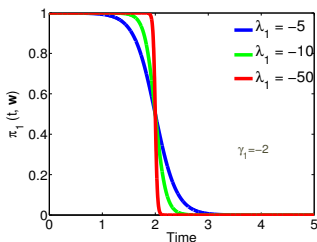
$$f(y_i | t_i; \boldsymbol{\theta}) = \sum_{k=1}^K \pi_k(t_i; \mathbf{w}) \mathcal{N}(y_i; \beta_k^T \mathbf{x}_i, \sigma_k^2)$$

- Both the mixing proportions and the component parameters are time-varying
- Parameter vector of the model : $\boldsymbol{\theta} = (\mathbf{w}^T, \beta_1^T, \dots, \beta_K^T, \sigma_1^2, \dots, \sigma_K^2)^T$

Illustration

- Modeling with the logistic distribution allows activating simultaneously and preferentially several regimes during time

$$\pi_k(t_i; \mathbf{w}) = \frac{\exp(\lambda_k(t_i + \gamma_k))}{\sum_{\ell=1}^K \exp(\lambda_\ell(t_i + \gamma_\ell))}$$

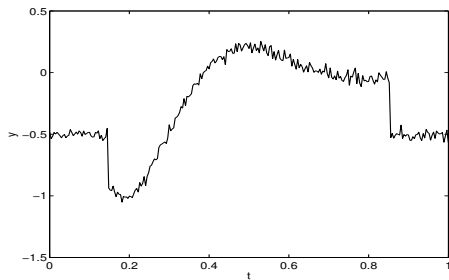


⇒ The parameter w_{k1} controls the quality of transitions between regimes

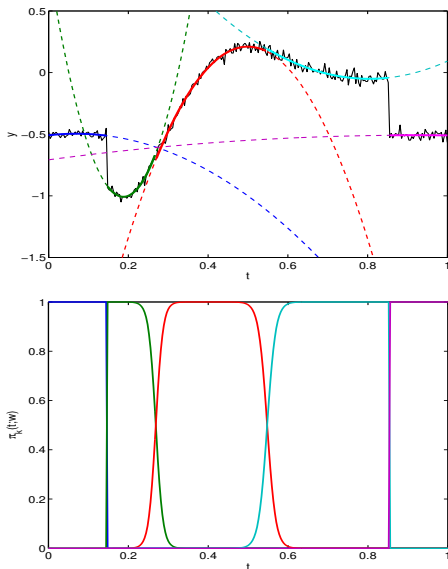
⇒ The parameter w_{k0} is related to the transition time point

- Ensure time series segmentation into contiguous segments

Illustration



Illustration



$K = 5$ polynomial components of degree $p = 2$

Parameter estimation: MLE via EM: EM-RHLP

- Parameter vector: $\boldsymbol{\theta} = (\mathbf{w}^T, \boldsymbol{\beta}_1^T, \dots, \boldsymbol{\beta}_K^T, \sigma_1^2, \dots, \sigma_K^2)^T$
- Maximize the observed-data log-likelihood:

$$\log L(\boldsymbol{\theta}; \mathbf{y}, \mathbf{t}) = \sum_{i=1}^n \log \sum_{k=1}^K \pi_k(t_i; \mathbf{w}) \mathcal{N}(y_i; \boldsymbol{\beta}_k^T \mathbf{x}_i, \sigma_k^2)$$

- Complete-data log-likelihood

$$\log L_c(\boldsymbol{\theta}; \mathbf{y}, \mathbf{t}, \mathbf{z}) = \sum_{i=1}^n \sum_{k=1}^K Z_{ik} \log[\pi_k(t_i; \mathbf{w}) \mathcal{N}(y_i; \boldsymbol{\beta}_k^T \mathbf{x}_i, \sigma_k^2)]$$

$Z_{ik} = 1$ if $Z_i = k$ (i.e., when y_i belongs to the k th component)

- The Q -function

$$\begin{aligned} Q(\boldsymbol{\theta}, \boldsymbol{\theta}^{(q)}) &= \mathbb{E} \left[\log L_c(\boldsymbol{\theta}; \mathbf{y}, \mathbf{t}, \mathbf{z}) \mid \mathbf{y}, \mathbf{t}; \boldsymbol{\theta}^{(q)} \right] \\ &= \sum_{i=1}^n \sum_{k=1}^K \tau_{ik}^{(q)} \left[\log \pi_k(t_i; \mathbf{w}) \mathcal{N}(y_i; \boldsymbol{\beta}_k^T \mathbf{x}_i, \sigma_k^2) \right] \end{aligned}$$

- **E-Step:** compute the posterior component memberships:

$$\tau_{ik}^{(q)} = \mathbb{P}(Z_i = k | y_i, t_i; \boldsymbol{\theta}^{(q)}) = \frac{\pi_k(t_i; \mathbf{w}^{(q)}) \mathcal{N}(y_i; \boldsymbol{\beta}_k^{T(q)} \mathbf{x}_i, \sigma_k^2(q))}{\sum_{\ell=1}^K \pi_\ell(t_i; \mathbf{w}^{(q)}) \mathcal{N}(y_i; \boldsymbol{\beta}_\ell^{T(q)} \mathbf{x}_i, \sigma_\ell^2(q))}.$$

- **M-Step:** compute the parameter update $\boldsymbol{\theta}^{(q+1)} = \arg \max_{\boldsymbol{\theta}} Q(\boldsymbol{\theta}, \boldsymbol{\theta}^{(q)})$

$$\boldsymbol{\beta}_k^{(q+1)} = \left[\sum_{i=1}^n \tau_{ik}^{(q)} \mathbf{x}_i \mathbf{x}_i^T \right]^{-1} \sum_{i=1}^n \tau_{ik}^{(q)} y_i \mathbf{x}_i \quad \text{weighted polynomial regression}$$

$$\sigma_k^2(q+1) = \frac{1}{\sum_{i=1}^n \tau_{ik}^{(q)}} \sum_{i=1}^n \tau_{ik}^{(q)} (y_i - \boldsymbol{\beta}_k^{T(q+1)} \mathbf{x}_i)^2$$

$$\mathbf{w}^{(q+1)} = \arg \max_{\mathbf{w}} \sum_{i=1}^n \sum_{k=1}^K \tau_{ik}^{(q)} \log \pi_k(t_i; \mathbf{w}) \quad \text{weighted logistic regression}$$

EM-RHLP algorithm

M-Step: Weighted multi-class logistic regression

$$\mathbf{w}^{(q+1)} = \arg \max_{\mathbf{w}} \sum_{i=1}^n \sum_{k=1}^K \tau_{ik}^{(q)} \log \pi_k(t_i; \mathbf{w})$$

- A convex optimization problem
- Solved with a multi-class Iteratively Reweighted Least Squares (IRLS) algorithm (Newton-Raphson)

$$\mathbf{w}^{(l+1)} = \mathbf{w}^{(l)} - \left[\frac{\partial^2 Q_{\mathbf{w}}(\mathbf{w}, \boldsymbol{\theta}^{(q)})}{\partial \mathbf{w} \partial \mathbf{w}^T} \right]_{\mathbf{w}=\mathbf{w}^{(l)}}^{-1} \left. \frac{\partial Q_{\mathbf{w}}(\mathbf{w}, \boldsymbol{\theta}^{(q)})}{\partial \mathbf{w}} \right|_{\mathbf{w}=\mathbf{w}^{(l)}}$$

- Analytic calculation of the Hessian and the gradient
- EM-RHLP algorithm complexity: $\mathcal{O}(I_{EM} I_{IRLS} K^3 p^3 n)$ (more advantageous than dynamic programming).

Time series approximation and segmentation

1 Approximation: a prototype mean curve

$$\hat{y}_i = \mathbb{E}[y_i | t_i; \hat{\boldsymbol{\theta}}] = \sum_{k=1}^K \pi_k(t_i; \hat{\mathbf{w}}) \hat{\boldsymbol{\beta}}_k^T \mathbf{x}_i$$

↪ A smooth and flexible approximation thanks to the the logistic weights

↪ The RHLP can be used as nonlinear regression model $y_i = f(t_i; \boldsymbol{\theta}) + \epsilon_i$ by covering functions of the form $f(t_i; \boldsymbol{\theta}) = \sum_{k=1}^K \pi_k(t_i; \mathbf{w}) \boldsymbol{\beta}_k^T \mathbf{x}_i$ [3]

2 Curve segmentation:

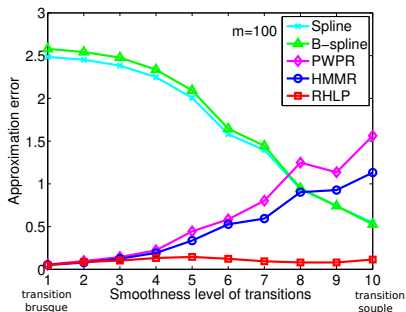
$$\hat{z}_i = \arg \max_{1 \leq k \leq K} \mathbb{E}[z_i | t_i; \hat{\mathbf{w}}] = \arg \max_{1 \leq k \leq K} \pi_k(t_i; \hat{\mathbf{w}})$$

3 Model selection Application of BIC, ICL

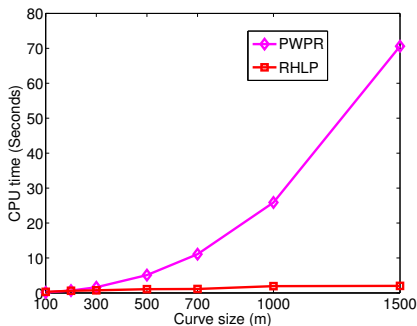
$\text{BIC}(K, p) = \log L(\hat{\boldsymbol{\theta}}) - \frac{\nu_{\boldsymbol{\theta}} \log(n)}{2}$; $\text{ICL}(K, p) = \log L_c(\hat{\boldsymbol{\theta}}) - \frac{\nu_{\boldsymbol{\theta}} \log(n)}{2}$ where $\nu_{\boldsymbol{\theta}} = K(p + 4) - 2$.

Evaluation in modeling and segmentation

Approximation error as a function of the speed of transitions

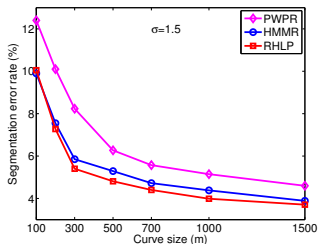
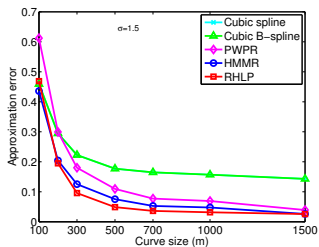


Computing time

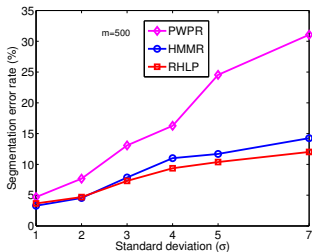
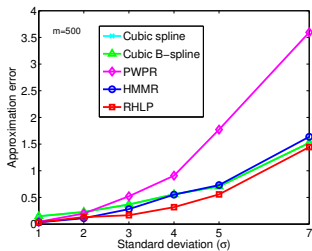


Evaluation in approximation and segmentation

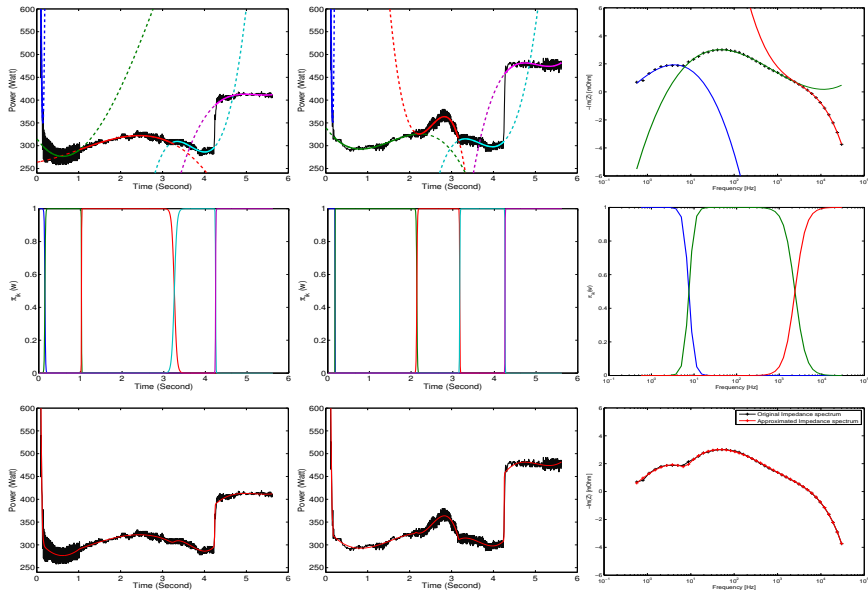
varying m



varying σ



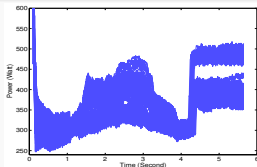
Application to real data



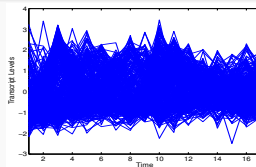
- 1 Mixture models for temporal data segmentation
- 2 Mixture models for functional data analysis
 - Mixture of piecewise regressions
 - Mixture of hidden logistic process regressions
 - Functional discriminant analysis

Functional data analysis context

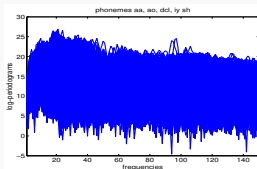
Many curves to analyze



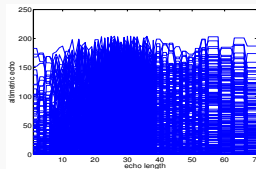
Railway switch curves



Yeast cell cycle curves



Phonemes curves



Satellite waveforms

Objectives

- Curve clustering/classification (functional data analysis framework)
- Deal with the problem of regime changes \leftrightarrow Curve segmentation

Functional data analysis context

Data

- The individuals are entire functions (e.g., curves, surfaces)
- A set of n univariate curves $((\mathbf{x}_1, \mathbf{y}_1), \dots, (\mathbf{x}_n, \mathbf{y}_n))$
- $(\mathbf{x}_i, \mathbf{y}_i)$ consists of m_i observations $\mathbf{y}_i = (y_{i1}, \dots, y_{im_i})$ observed at the independent covariates, (e.g., time t in time series), $(x_{i1}, \dots, x_{im_i})$

Objectives: exploratory or decisional

- 1 Unsupervised classification (clustering, segmentation) of functional data, particularly curves with regime changes: [4] [9], [C11] [16]
- 2 Discriminant analysis of functional data: [2], [5]

Functional data clustering/classification tools

- A broad literature (Kmeans-type, Model-based, etc)
⇒ Mixture-model based cluster and discriminant analyzes

Mixture modeling framework for functional data

- The functional mixture model:

$$f(\mathbf{y}|\mathbf{x}; \Psi) = \sum_{k=1}^K \alpha_k f_k(\mathbf{y}|\mathbf{x}; \Psi_k)$$

- $f_k(\mathbf{y}|\mathbf{x})$ are tailored to functional data: can be polynomial (B-)spline regression, regression using wavelet bases etc, or Gaussian process regression, functional PCA

↔ more tailored to approximate smooth functions

↔ do not account for segmentation

Here $f_k(\mathbf{y}|\mathbf{x})$ itself exhibits a clustering property via hidden variables (regimes):

- 1 Riecewise regression model (PWR)
- 2 Regression model with a hidden process (RHLP)

Piecewise regression mixture model (PWRM) [9]

- A probabilistic version of the K -means-like approach of (Hébrail et al., 2010)

$$f(\mathbf{y}_i | \mathbf{x}_i; \Psi) = \sum_{k=1}^K \alpha_k \underbrace{\prod_{r=1}^{R_k} \prod_{j \in I_{kr}} \mathcal{N}(y_{ij}; \beta_{kr}^T \mathbf{x}_{ij}, \sigma_{kr}^2)}_{\text{PWR}}$$

$I_{kr} = (\xi_{kr}, \xi_{k,r+1}]$ are the element indexes of segment r for component k

- \hookrightarrow Simultaneously accounts for curve clustering and segmentation
- Parameter vector $\Psi = (\alpha_1, \dots, \alpha_{K-1}, \boldsymbol{\theta}_1^T, \dots, \boldsymbol{\theta}_K^T, \boldsymbol{\xi}_1^T, \dots, \boldsymbol{\xi}_K^T)^T$ with $\boldsymbol{\theta}_k = (\beta_{k1}^T, \dots, \beta_{kR_k}^T, \sigma_{k1}^2, \dots, \sigma_{kR_k}^2)^T$ and $\boldsymbol{\xi}_k = (\xi_{k1}, \dots, \xi_{k,R_k+1})^T$

Parameter estimation

- 1 Maximum likelihood estimation: EM-PWRM
- 2 Maximum classification likelihood estimation: CEM-PWRM

Maximum likelihood estimation via EM: EM-PWRM

- Maximize the observed-data log-likelihood:

$$\log L(\Psi) = \sum_{i=1}^n \log \sum_{k=1}^K \alpha_k \prod_{r=1}^{R_k} \prod_{j \in I_{kr}} \mathcal{N}(y_{ij}; \beta_{kr}^T \mathbf{x}_{ij}, \sigma_{kr}^2)$$

- The complete-data log-likelihood

$$\log L_c(\Psi, \mathbf{z}) = \sum_{i=1}^n \sum_{k=1}^K Z_{ik} \log \alpha_k + \sum_{i=1}^n \sum_{k=1}^K \sum_{r=1}^{R_k} \sum_{j \in I_{kr}} Z_{ik} \log \mathcal{N}(y_{ij}; \beta_{kr}^T \mathbf{x}_{ij}, \sigma_{kr}^2)$$

- The conditional expected complete-data log-likelihood

$$Q(\Psi, \Psi^{(q)}) = \sum_{i=1}^n \sum_{k=1}^K \tau_{ik}^{(q)} \log \alpha_k + \sum_{i=1}^n \sum_{k=1}^K \sum_{r=1}^{R_k} \sum_{j \in I_{kr}} \tau_{ik}^{(q)} \log \mathcal{N}(y_{ij}; \beta_{kr}^T \mathbf{x}_{ij}, \sigma_{kr}^2)$$

EM-PWRM algorithm

E-step: Compute the Q -function

\hookrightarrow Compute the posterior probability that the i th curve belongs to component k :

$$\tau_{ik}^{(q)} = \mathbb{P}(Z_i = k | \mathbf{y}_i, \mathbf{x}_i; \Psi^{(q)}) = \frac{\alpha_k^{(q)} f_k(\mathbf{y}_i | \mathbf{x}_i; \Psi_k^{(q)})}{\sum_{k'=1}^K \alpha_{k'}^{(q)} f_{k'}(\mathbf{y}_i | \mathbf{x}_i; \Psi_{k'}^{(q)})}$$

M-step: Compute the update $\Psi^{(q+1)} = \arg \max_{\Psi} Q(\Psi, \Psi^{(q)})$

- $\alpha_k^{(q+1)} = \frac{\sum_{i=1}^n \tau_{ik}^{(q)}}{n}$, ($k = 1, \dots, K$)
- maximization w.r.t the piecewise regression parameters $\{\xi_{kr}, \beta_{kr}, \sigma_{kr}^2\} \hookrightarrow$ a weighted piecewise regression problem \hookrightarrow dynamic programming:

$$\beta_{kr}^{(q+1)} = \left[\sum_{i=1}^n \tau_{ik}^{(q)} \mathbf{X}_{ir}^T \mathbf{X}_{ir} \right]^{-1} \sum_{i=1}^n \tau_{ik}^{(q)} \mathbf{X}_{ir} \mathbf{y}_{ir}$$
$$\sigma_{kr}^{2(q+1)} = \frac{1}{\sum_{i=1}^n \sum_{j \in I_{kr}^{(q)}} \tau_{ik}^{(q)}} \sum_{i=1}^n \tau_{ik}^{(q)} \|\mathbf{y}_{ir} - \mathbf{X}_{ir} \beta_{kr}^{(q+1)}\|^2$$

\mathbf{y}_{ir} are the observations of segment r of the i th curve and \mathbf{X}_{ir} its design matrix

Maximum classification likelihood estimation: CEM-PWRM

- Maximize the complete-data log-likelihood w.r.t (Ψ, \mathbf{z}) simultaneously
- C-step: Bayes' optimal allocation rule: $\hat{z}_i = \arg \max_{1 \leq k \leq K} \tau_{ik}(\hat{\Psi})$

CEM-PWRM is equivalent to the K -means-like algorithm of Hébrail et al. (2010):

$$\log L_c(\mathbf{z}, \Psi) \propto \mathcal{J}(\mathbf{z}, \{\mu_{kr}, I_{kr}\}) = \sum_{k=1}^K \sum_{r=1}^{R_k} \sum_{i|Z_i=k} \sum_{j \in I_{kr}} (y_{ij} - \mu_{kr})^2$$

if the following conditions hold:

- $\alpha_k = \frac{1}{K} \forall K$ (identical mixing proportions);
- $\sigma_{kr}^2 = \sigma^2 \forall r$ and $\forall k$; (isotropic and homoskedastic model);
- μ_{kr} : piecewise *constant* regime approximation

- Curve clustering: $\hat{z}_i = \arg \max_k \tau_{ik}(\hat{\Psi})$ with $\tau_{ik}(\hat{\Psi}) = \mathbb{P}(Z_i | \mathbf{x}_i, \mathbf{y}_i; \hat{\Psi})$
- Model selection: Application of BIC, ICL
- Complexity in $\mathcal{O}(I_{EM} K R n m^2 p^3)$: Significant computational load for large m

Simulation results

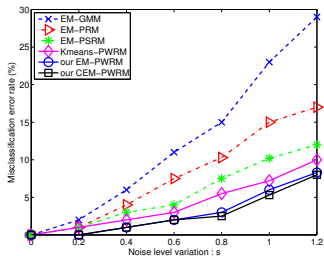
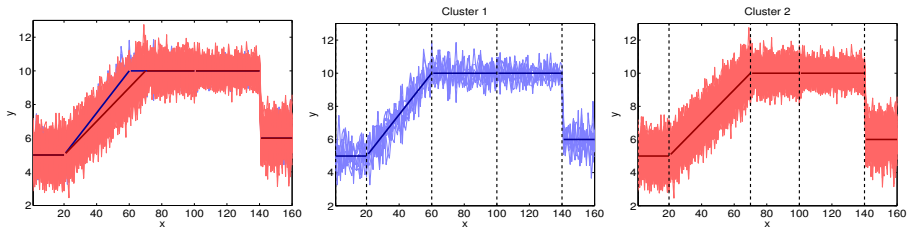
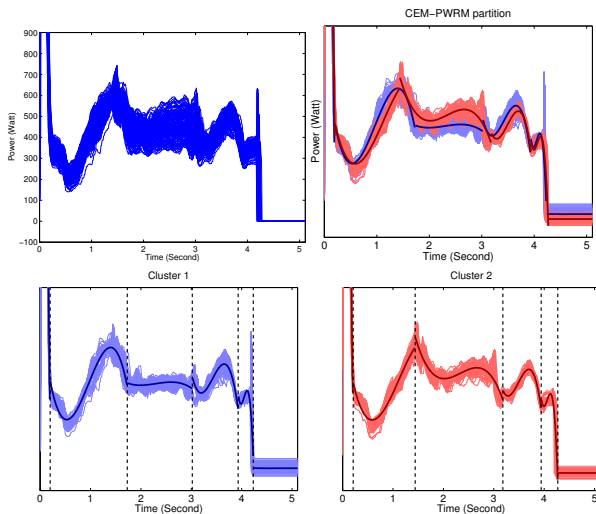


Figure: Misclassification error rate versus the noise level variation.

Application to switch operation curves

Data set: $n = 146$ real curves of $m = 511$ observations.

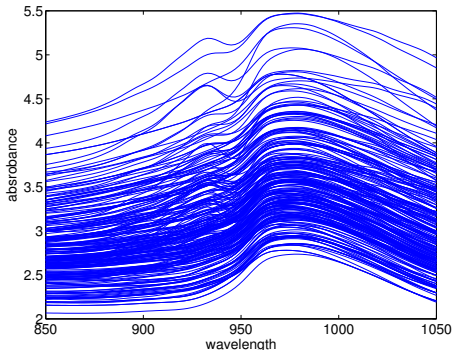
Each curve is composed of $R = 6$ electromechanical phases (regimes)



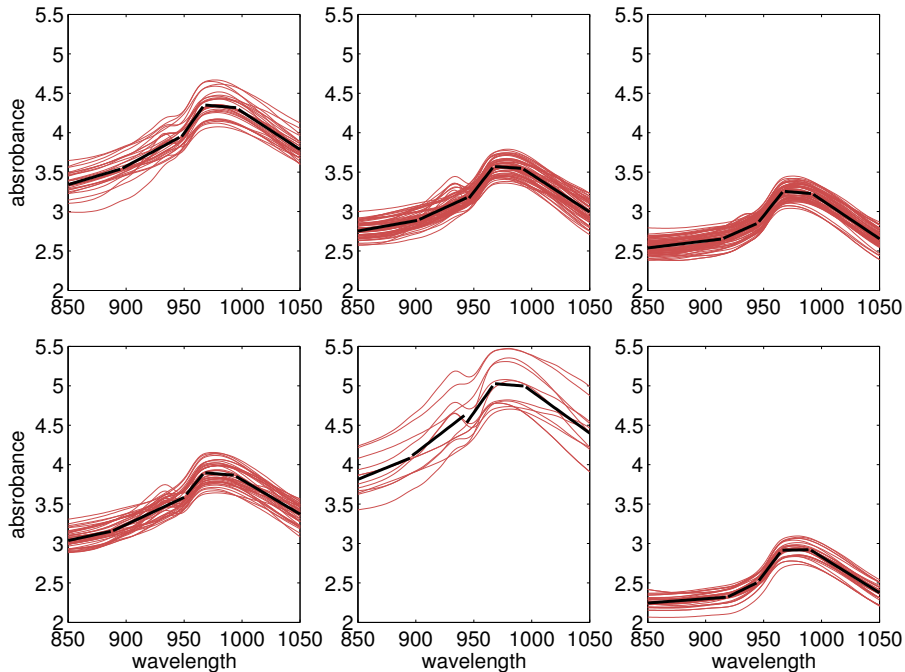
Application to Tecator data

The Tecator data set¹ contains $n = 240$ spectra with $m = 100$ observations for each spectrum

Data considered in the same setting as in Hébrail et al. (2010) (six clusters, each cluster is approximated by five linear segments ($R = 5, p = 1$))



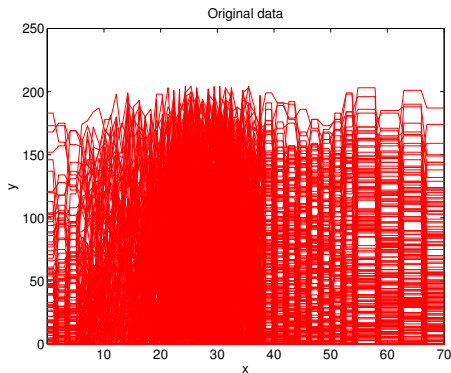
¹Tecator data are available at <http://lib.stat.cmu.edu/datasets/tecator>.



Topex/Poseidon satellite data

The Topex/Poseidon radar satellite data² contains $n = 472$ waveforms of the measured echoes, sampled at $m = 70$ (number of echoes)

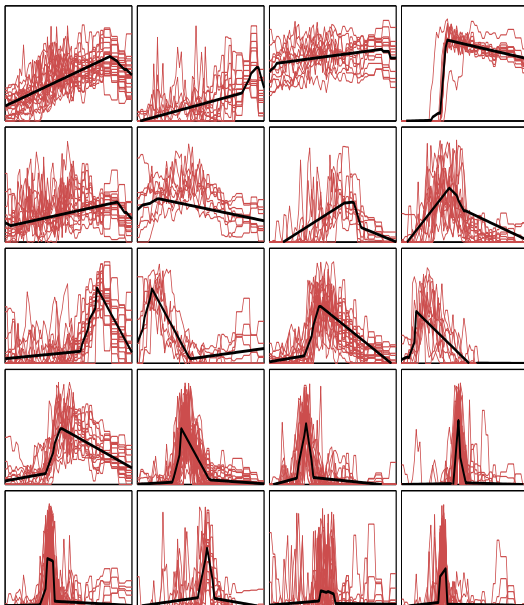
We considered the same number of clusters (twenty) and a piecewise linear approximation of four segments per cluster as in Hébrail et al. (2010).



²Satellite data are available at

<http://www.lsp.ups-tlse.fr/staph/npfda/npfda-datasets.html>.

CEM-PWRM clustering



Summary

- Probabilistic approach to the simultaneous curve clustering and optimal segmentation
 - Two algorithms: EM-PWRM and CEM-PWRM
 - CEM-PWRM is a probabilistic-based version of the K -means-like algorithm Hébrail et al. (2010)
-
- If the aim is density estimation, the EM version is suggested (CEM provides biased estimators but is well-tailored to the segmentation/clustering end)
 - For continuous functions the PWRM in its current formulation, may lead to discontinuities between segments for the piecewise approximation.
 - This may be avoided by posterior interpolation as in Hébrail et al. (2010).
 - May lead to significant computational load especially for large time series. However, for quite reasonable dimensions, the algorithms remain usable

Mixture of hidden logistic process regressions [4]

- The mixture of regressions with hidden logistic processes (MixRHLP):

$$f(\mathbf{y}_i | \mathbf{x}_i; \Psi) = \sum_{k=1}^K \alpha_k \underbrace{\prod_{j=1}^{m_i} \sum_{r=1}^{R_k} \pi_{kr}(x_j; \mathbf{w}_k) \mathcal{N}(y_{ij}; \beta_{kr}^T \mathbf{x}_j, \sigma_{kr}^2)}_{\text{RHLP}}$$

$$\pi_{kr}(x_j; \mathbf{w}_k) = \mathbb{P}(H_{ij} = r | Z_i = k, x_j; \mathbf{w}_k) = \frac{\exp(w_{kr0} + w_{kr1}x_j)}{\sum_{r'=1}^{R_k} \exp(w_{kr'0} + w_{kr'1}x_j)},$$

- Two types of component memberships:

↪ cluster memberships (global) $Z_{ik} = 1$ iff $Z_i = k$

↪ regime memberships for a given cluster (local): $H_{ijr} = 1$ iff $H_{ij} = r$

MixRHLP deals better with the quality of regime changes

- Parameter estimation via the EM algorithm: EM-MixRHLP

MLE estimation via the EM algorithm

- The observed-data log-likelihood

$$\log L(\Psi) = \sum_{i=1}^n \log \sum_{k=1}^K \alpha_k \prod_{j=1}^{m_i} \sum_{r=1}^{R_k} \pi_{kr}(x_j; \mathbf{w}_k) \mathcal{N}(y_{ij}; \beta_{kr}^T \mathbf{x}_j, \sigma_{kr}^2)$$

- The complete-data log-likelihood:

$$\log L_c(\Psi) = \sum_{i=1}^n \sum_{k=1}^K Z_{ik} \log \alpha_k + \sum_{i,j} \sum_{k=1}^K \sum_{r=1}^{R_k} Z_{ik} H_{ijr} \log \left[\pi_{kr}(x_j; \mathbf{w}_k) \mathcal{N}(y_{ij}; \beta_{kr}^T \mathbf{x}_j, \sigma_{kr}^2) \right]$$

- The conditional expected complete-data log-likelihood

$$\begin{aligned} Q(\Psi, \Psi^{(q)}) &= \mathbb{E} \left[\log L_c(\Psi) \mid \mathcal{D}; \Psi^{(q)} \right] \\ &= \sum_{i=1}^n \sum_{k=1}^K \tau_{ik}^{(q)} \log \alpha_k + \sum_{i,j} \sum_{k=1}^K \sum_{r=1}^{R_k} \tau_{ik}^{(q)} \gamma_{ijr}^{(q)} \log \left[\pi_{kr}(x_j; \mathbf{w}_k) \mathcal{N}(y_{ij}; \beta_{kr}^T \mathbf{x}_j, \sigma_{kr}^2) \right]. \end{aligned}$$

EM-MixRHLP algorithm

E-step

- The posterior cluster memberships:

$$\tau_{ik}^{(q)} = \mathbb{P}(Z_i = k | \mathbf{y}_i, \mathbf{x}_i; \Psi_k^{(q)}) = \frac{\alpha_k^{(q)} f(\mathbf{y}_i | Z_i = k, \mathbf{x}_i; \Psi_k^{(q)})}{\sum_{k'=1}^K \alpha_{k'}^{(q)} f(\mathbf{y}_i | Z_i = k', \mathbf{x}_i; \Psi_{k'}^{(q)})}$$

- the posterior regime memberships:

$$\gamma_{ijr}^{(q)} = \mathbb{P}(H_{ij} = r | Z_i = k, y_{ij}, t_j; \Psi_k^{(q)}) = \frac{\pi_{kr}(x_j; \mathbf{w}_k^{(q)}) \mathcal{N}(y_{ij}; \boldsymbol{\beta}_{kr}^{T(q)} \mathbf{x}_j, \sigma_{kr}^{2(q)})}{\sum_{r'=1}^{R_k} \pi_{kr'}(x_j; \mathbf{w}_k^{(q)}) \mathcal{N}(y_{ij}; \boldsymbol{\beta}_{kr'}^{T(q)} \mathbf{x}_j, \sigma_{kr'}^{2(q)})}$$

Computed directly (i.e, without a forward-backward recursion as in the Markovian model).

M-step of the EM-MixRHLP

M-step: calculate the update $\Psi^{(q+1)} = \arg \max_{\Psi} Q(\Psi, \Psi^{(q)})$.

- Mixing proportions update: standard

$$\alpha_k^{(q+1)} = \frac{1}{n} \sum_{i=1}^n \tau_{ik}^{(q)}, \quad (k = 1, \dots, K).$$

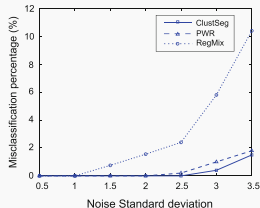
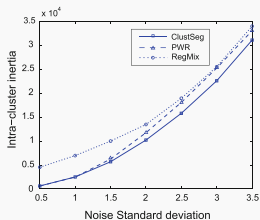
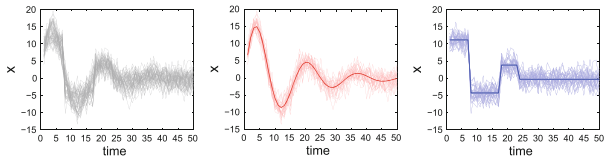
- Regression parameters update: Analytic weighted least-squares problems

$$\beta_{kr}^{(q+1)} = \left[\sum_{i=1}^n \tau_{ik}^{(q)} \mathbf{X}_i^T \mathbf{W}_{ikr}^{(q)} \mathbf{X}_i \right]^{-1} \sum_{i=1}^n \tau_{ik}^{(q)} \mathbf{X}_i^T \mathbf{W}_{ikr}^{(q)} \mathbf{y}_i,$$
$$\sigma_{kr}^2{}^{(q+1)} = \frac{\sum_{i=1}^n \tau_{ik}^{(q)} \|\sqrt{\mathbf{W}_{ikr}^{(q)}} (\mathbf{y}_i - \mathbf{X}_i \beta_{kr}^{(q+1)})\|^2}{\sum_{i=1}^n \tau_{ik}^{(q)} \text{trace}(\mathbf{W}_{ikr}^{(q)})},$$

where $\mathbf{W}_{ikr}^{(q)} = \text{diag}(\gamma_{ijr}^{(q)}; j = 1, \dots, m_i)$.

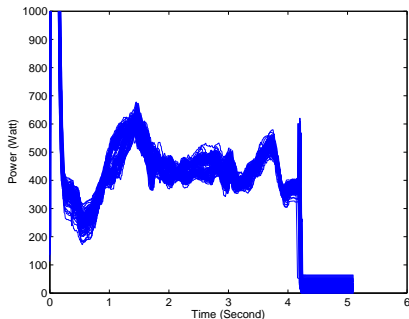
- Maximization w.r.t the logistic processes' parameters $\{\mathbf{w}_k\}$: solving multinomial logistic regression problems \Rightarrow IRLS
- \hookrightarrow EM-MixRHLP has complexity in $\mathcal{O}(I_{EM} I_{IRLS} K R^3 n m p^3)$ (K -means like algo. for PWR is in $\mathcal{O}(I_{KM} K R n m^2 p^3)$) \hookrightarrow computationally attractive for large m with moderate value of R .

EM-MixRHLP clustering of simulated data



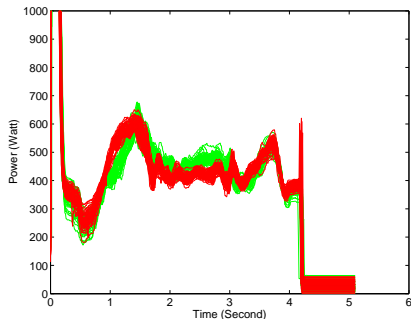
Clustering switch operations

Clustering real curves of switch operations The data set contains 115 curves of $R = 6$ operations electromechanical process
 $K = 2$ clusters: operating state without/with possible defect



Clustering switch operations

Clustering real curves of switch operations The data set contains 115 curves of $R = 6$ operations electromechanical process
 $K = 2$ clusters: operating state without/with possible defect



Functional discriminant analysis

Supervised classification context

- Data: a training set of labeled functions $((\mathbf{x}_1, \mathbf{y}_1, c_1), \dots, (\mathbf{x}_n, \mathbf{y}_n, c_n))$ where $c_i \in \{1, \dots, G\}$ is the class label of the i th curve
- Problem: predict the class label c_i for a new unlabeled function $(\mathbf{x}_i, \mathbf{y}_i)$

Tool: Discriminant analysis

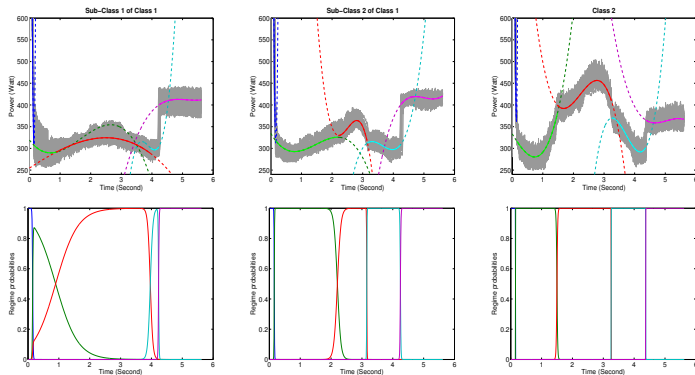
Use the Bayes' allocation rule

$$\hat{c}_i = \arg \max_{1 \leq g \leq G} \frac{\mathbb{P}(C_i = g) f(\mathbf{y}_i | \mathbf{x}_i; \Psi_g)}{\sum_{g'=1}^G \mathbb{P}(C_i = g') f(\mathbf{y}_i | \mathbf{x}_i; \Psi_{g'})},$$

based on a generative model $f(\mathbf{y}_i | \mathbf{x}_i; \Psi_g)$ for each group g

- Homogeneous classes: Functional Linear Discriminant Analysis [8]
- Dispersed classes: Functional Mixture Discriminant Analysis [5]

Applications to switch curves



Approach	Classification error rate (%)	Intra-class inertia
FLDA-PR	11.5	10.7350×10^9
FLDA-SR	9.53	9.4503×10^9
FLDA-RHLP	8.62	8.7633×10^9
FMDA-PRM	9.02	7.9450×10^9
FMDA-SRM	8.50	5.8312×10^9
FMDA-MixRHLP	6.25	3.2012×10^9

Summary

- A full generative model for curve clustering and segmentation
- The segmentation is smoothly controlled by logistic functions
- An alternative to the previously described mixture of piecewise regressions
- more advantageous compared to approaches involving dynamic programming namely when using piecewise regression especially for large samples.
- Could be extended to the multivariate case without a major effort

Some ongoing research and perspectives

- Model-based co-clustering for high-dimensional functional data

Functional latent block model (FLBM) available soon on arXiv

Data: $\mathbf{Y} = (\mathbf{y}_{ij})$: n individuals defined on a set \mathcal{I} with d continuous functional variables defined on a set \mathcal{J} where $y_{ij}(t) = \mu(x_{ij}(t); \boldsymbol{\beta}) + \epsilon(t)$, t defined on \mathcal{T} .

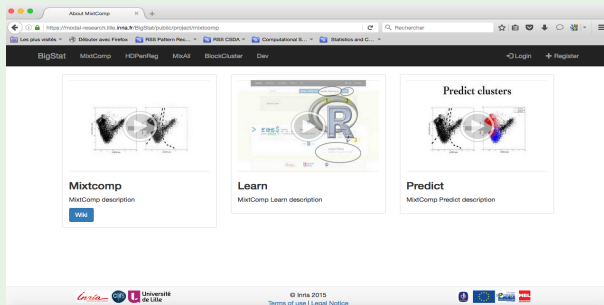
- FLBM model:

$$\begin{aligned} f(\mathbf{Y}|\mathbf{X}; \boldsymbol{\Psi}) &= \sum_{(z,w) \in \mathcal{Z} \times \mathcal{W}} \mathbb{P}(\mathbf{Z}, \mathbf{W}) f(\mathbf{Y}|\mathbf{X}, \mathbf{Z}, \mathbf{W}; \boldsymbol{\theta}) \\ &= \sum_{(z,w) \in \mathcal{Z} \times \mathcal{W}} \prod_{i,k} \pi_k^{z_{ik}} \prod_{j,\ell} \rho_\ell^{w_{j\ell}} \prod_{i,j,k,\ell} f(\mathbf{y}_{ij}|\mathbf{x}_{ij}; \boldsymbol{\theta}_{k\ell})^{z_{ik}w_{j\ell}}. \end{aligned}$$

- An RHLP is used as a conditional block distribution $f(\mathbf{y}_{ij}|\mathbf{x}_{ij}; \boldsymbol{\theta}_{k\ell})$
- Model inference using Stochastic EM

Some ongoing research and perspectives

MixtComp Software



Mixtures for massive data

- Mixture density estimation for massive data clustering
- Use ensemble methods to distribute the data
 - ↔ Bag of Little Boostrops (BLB) (Kleiner et al., 2014)
 - ↔ Aggregate local estimators from BLB sub-samples: Hierarchical (mixture) of experts aggregation

References

- [1] F. Chamroukhi, A. Samé, G. Govaert, and P. Aknin. Time series modeling by a regression approach based on a latent process. *Neural Networks*, 22(5-6):593–602, 2009
- [2] F. Chamroukhi, A. Samé, G. Govaert, and P. Aknin. A hidden process regression model for functional data description. application to curve discrimination. *Neurocomputing*, 73(7-9):1210–1221, 2010
- [3] F. Chamroukhi, A. Samé, G. Govaert, and P. Aknin. Modèle à processus latent et algorithme EM pour la régression non linéaire. *Revue des Nouvelles Technologies de l'Information (RNTI)*, S1:15–32, Jan 2011
- [4] A. Samé, F. Chamroukhi, Gérard Govaert, and P. Aknin. Model-based clustering and segmentation of time series with changes in regime. *Advances in Data Analysis and Classification*, 5:301–321, 2011
- [5] F. Chamroukhi, H. Glotin, and A. Samé. Model-based functional mixture discriminant analysis with hidden process regression for curve classification. *Neurocomputing*, 112:153–163, 2013a
- [6] F. Chamroukhi, D. Trabelsi, S. Mohammed, L. Oukhellou, and Y. Amirat. Joint segmentation of multivariate time series with hidden process regression for human activity recognition. *Neurocomputing*, 120:633–644, November 2013b
- [7] D. Trabelsi, S. Mohammed, F. Chamroukhi, L. Oukhellou, and Y. Amirat. An unsupervised approach for automatic activity recognition based on hidden markov model regression. *IEEE TASE*, 3(10):829–335, 2013
- [8] F. Chamroukhi. Unsupervised learning of regression mixture models with unknown number of components. *Journal of Statistical Computation and Simulation*, 2015c. doi: 10.1080/00949655.2015.1109096. 05 Nov 2015
- [9] F. Attal, M. Dedabrishvili, S. Mohammed, F. Chamroukhi, L. Oukhellou, and Y. Amirat. Physical human activity recognition using wearable sensors. *Sensors*, 15(12):31314–31338, 2015
- [10] F. Chamroukhi. Piecewise regression mixture for simultaneous curve clustering and optimal segmentation. *Journal of Classification - Springer*, 33, 2016a. doi: 10.1007/s00357-. In Press
- [11] F. Chamroukhi. Robust mixture of experts modeling using the t -distribution. *Neural Networks - Elsevier*, 2016b. In press
- [12] F. Chamroukhi, M. Bartcus, and H. Glotin. Dirichlet process parsimonious gaussian mixture for clustering. *arXiv:1501.03347*, 2015. In revision
- [13] F. Chamroukhi. Bayesian mixtures of spatial spline regressions. *arXiv:1508.00635*, Aug 2015a. (v1) submitted
- [14] F. Chamroukhi. Non-normal mixtures of experts. *arXiv:1506.06707*, July 2015b. Report (61 pages)
- [15] F. Chamroukhi. Robust mixture of experts modeling using the skew- t distribution. 2015d. under review

References I

- F. Attal, M. Dedabrishvili, S. Mohammed, F. Chamroukhi, L. Oukhellou, and Y. Amirat. Physical human activity recognition using wearable sensors. *Sensors*, 15(12):31314–31338, 2015.
- F. Chamroukhi. Bayesian mixtures of spatial spline regressions. *arXiv:1508.00635*, Aug 2015a. (v1) submitted.
- F. Chamroukhi. Non-normal mixtures of experts. *arXiv:1506.06707*, July 2015b. Report (61 pages).
- F. Chamroukhi. Unsupervised learning of regression mixture models with unknown number of components. *Journal of Statistical Computation and Simulation*, 2015c. doi: 10.1080/00949655.2015.1109096. 05 Nov 2015.
- F. Chamroukhi. Robust mixture of experts modeling using the skew- t distribution. 2015d. under review.
- F. Chamroukhi. Piecewise regression mixture for simultaneous curve clustering and optimal segmentation. *Journal of Classification - Springer*, 33, 2016a. doi: 10.1007/s00357-. In Press.
- F. Chamroukhi. Robust mixture of experts modeling using the t -distribution. *Neural Networks - Elsevier*, 2016b. In press.
- F. Chamroukhi, A. Samé, G. Govaert, and P. Aknin. Time series modeling by a regression approach based on a latent process. *Neural Networks*, 22(5-6):593–602, 2009.
- F. Chamroukhi, A. Samé, G. Govaert, and P. Aknin. A hidden process regression model for functional data description. application to curve discrimination. *Neurocomputing*, 73(7-9):1210–1221, 2010.
- F. Chamroukhi, A. Samé, G. Govaert, and P. Aknin. Modèle à processus latent et algorithme EM pour la régression non linéaire. *Revue des Nouvelles Technologies de l'Information (RNTI)*, S1:15–32, Jan 2011.
- F. Chamroukhi, H. Glotin, and A. Samé. Model-based functional mixture discriminant analysis with hidden process regression for curve classification. *Neurocomputing*, 112:153–163, 2013a.
- F. Chamroukhi, D. Trabelsi, S. Mohammed, L. Oukhellou, and Y. Amirat. Joint segmentation of multivariate time series with hidden process regression for human activity recognition. *Neurocomputing*, 120:633–644, November 2013b.
- F. Chamroukhi, M. Bartcus, and H. Glotin. Dirichlet process parsimonious gaussian mixture for clustering. *arXiv:1501.03347*, 2015. In revision.

References II

- G. Hébrail, B. Hugueney, Y. Lechevallier, and F. Rossi. Exploratory analysis of functional data via clustering and optimal segmentation. *Neurocomputing*, 73(7-9):1125–1141, March 2010.
- Wenxin Jiang and Martin A. Tanner. On the identifiability of mixtures-of-experts. *Neural Networks*, 12:197–220, 1999.
- Ariel Kleiner, Ameet Talwalkar, Purnamrita Sarkar, and Michael I. Jordan. A scalable bootstrap for massive data. *Journal of the Royal Statistical Society: Series B (Statistical Methodology)*, 76(4):795–816, September 2014.
- A. Samé, F. Chamroukhi, Gérard Govaert, and P. Aknin. Model-based clustering and segmentation of time series with changes in regime. *Advances in Data Analysis and Classification*, 5:301–321, 2011.
- D. Trabelsi, S. Mohammed, F. Chamroukhi, L. Oukhellou, and Y. Amirat. An unsupervised approach for automatic activity recognition based on hidden markov model regression. *IEEE TASE*, 3(10):829–335, 2013.

Thank you for your attention!

Identifiability of the RHLP model

- $f(\cdot; \Psi)$ is identifiable when $f(\cdot; \Psi) = f(\cdot; \Psi^*)$ if and only if $\Psi = \Psi^*$.
- via Lemma 2 of Jiang and Tanner (1999) for Mixture of Experts, we have any ordered and initialized irreducible RHLP is identifiable (up to a permutation).
- Ordered implies that there exist a certain ordering relationship such that $(\beta_1^T, \sigma_1^2)^T \prec \dots \prec (\beta_K^T, \sigma_K^2)^T$;
- initialized implies that $(w_{K0}, w_{k1}) = (0, 0)$
- irreducible implies that if $k \neq k'$, then one of the following conditions holds:
 $\beta_k \neq \beta_{k'}$ or $\sigma_k \neq \sigma_{k'}$
- The set $\{\mathcal{N}(y; \mu(\mathbf{x}; \beta_1), \sigma_1^2), \dots, \mathcal{N}(y; \mu(\mathbf{x}; \beta_{2K}), \sigma_{2K}^2)\}$ contains $2K$ linearly independent functions of y , for any $2K$ distinct pair (β_k, σ_k^2) for $k = 1, \dots, 2K$.